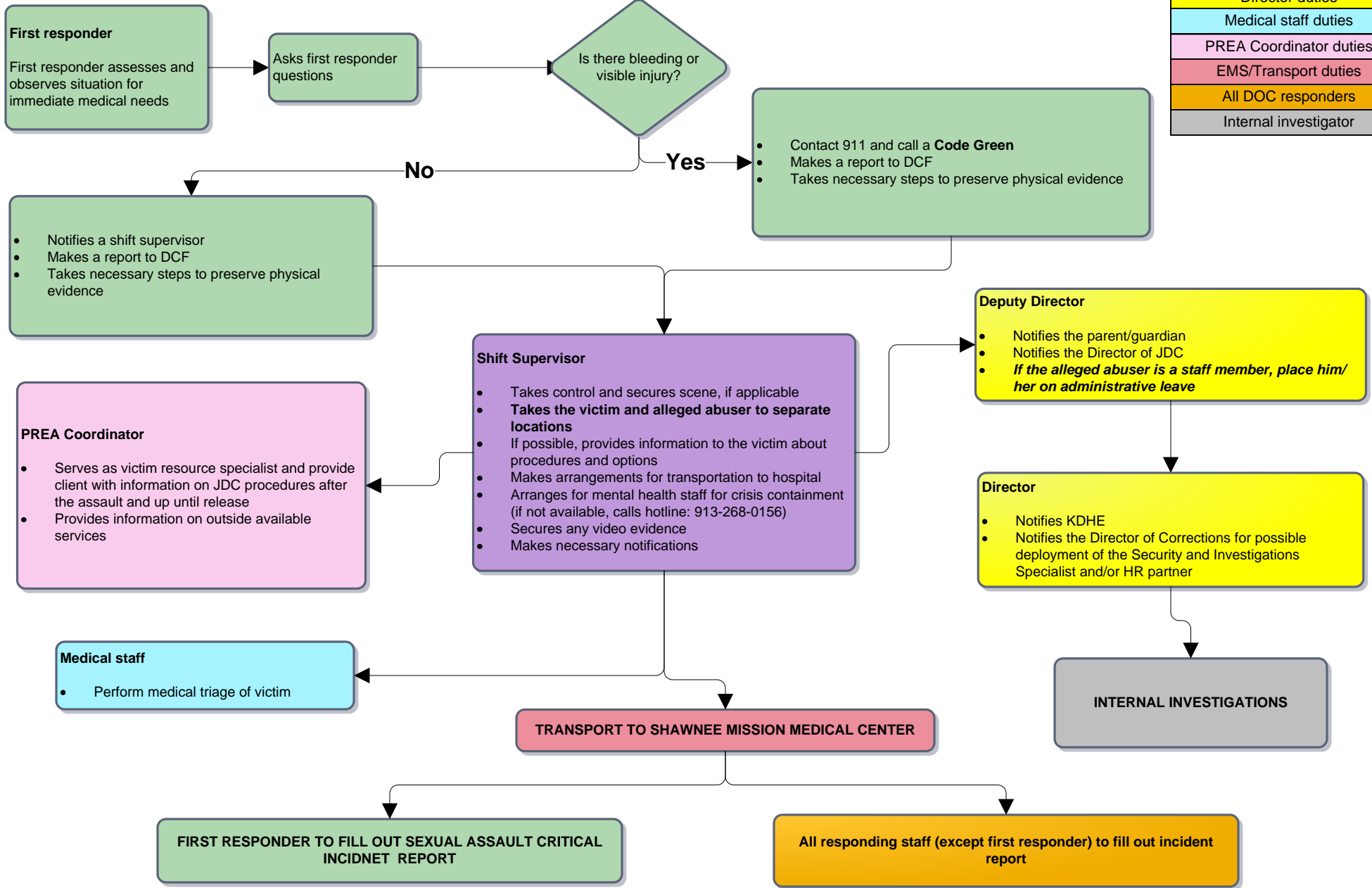


# JDC: First Response Procedures for Client Sexual Assault Reported or Discovered within 7 Days of Occurance

KEY	
	First responder duties
	Shift supervisor duties
	Director duties
	Medical staff duties
	PREA Coordinator duties
	EMS/Transport duties
	All DOC responders
	Internal investigator



### Notes

- Report of a sexual assault that occurred at another facility within 72 hours of admission: Shift supervisor should bring victim to Building One
- Community member-on-client sexual assault reported or discovered at intake within 7 days of occurrence: Once law enforcement is notified, officers will decide which jurisdiction the sexual assault falls under.
- Reports made 7 or more days after the incident: Medical, rape crisis and support services and referrals will be made available to clients.