

JJIS Assessment

Sex Trafficking Vulnerability Screening (STVS)

Screening Questions & Instruction Guide
(including JJIS Navigation)

January 2024



*THIS PAGE LEFT BLANK FOR PURPOSES
OF 2-SIDED PRINTING*



INTRODUCTION

Senate Bill 745 requires that as soon as practicable after a youth or adjudicated youth is taken into custody or, if the youth or adjudicated youth is not taken into custody, at the point of intake, a county juvenile department shall ensure the youth is screened to determine whether the youth or adjudicated youth is a victim of sex trafficking. You will screen youth using the Sex Trafficking Vulnerability Screening (STVS) in JJIS.

If the youth scores 4 or greater on the screening, you must immediately report the suspected sex trafficking to the Oregon Department of Human Services.

Follow your department’s practice for mandatory reporting. Document the report in JJIS.

When the total score is 4 or greater, you must also ensure someone within your department refers the youth to appropriate resources.

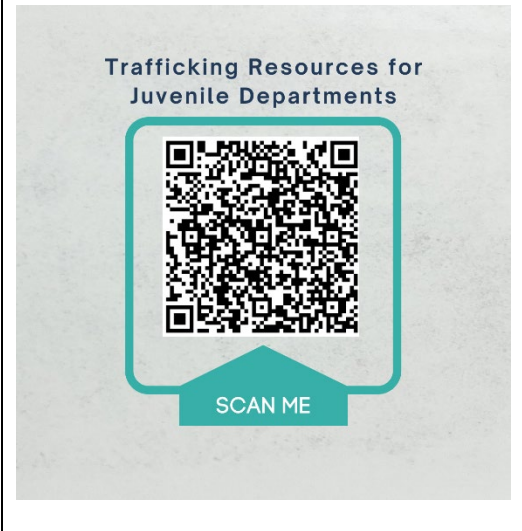
If you make a referral for resources, document it in JJIS.

We know that early identification and intervention can interrupt the continued victimization.

Thank you for joining us in our fight against trafficking.

A list of trafficking resources is available online.

Scan or click the QR code below to access [DOJ’s webpage of Trafficking Resources for County Juvenile Departments](https://www.doj.state.or.us/crime-victims/victims-services/trafficking-intervention-program/juvenile-department-resources/).*



*<https://www.doj.state.or.us/crime-victims/victims-services/trafficking-intervention-program/juvenile-department-resources/>

Questions About the Trafficking Screening?

Contact Sammy.bachman@deschutes.org	Contact Erika.frickey@crookcountyor.gov	Contact jgoodwin@josephinecounty.gov
---	---	---

*THIS PAGE LEFT BLANK FOR PURPOSES
OF 2-SIDED PRINTING*

Sex Trafficking Vulnerability Screening – Question Guide

1.0 Youth Demographics

1.1 Youth Name	JJIS datalinks automatically pre-fill from youth record
1.2 DOB	
1.3 Race	
1.4 Ethnicity	
1.5 Sex	
1.6 County of Jurisdiction	
1.7 Most Recent Referral	
1.8 Number of Run Referrals > 90 Days Ago	Multiple Choice <ul style="list-style-type: none"> • 0 • 1-3 • 4+
1.9 Number of Runaway Referrals in Past 90 Days	Multiple Choice <ul style="list-style-type: none"> • 0 • 1-3 • 4+
1.10 Youth Lives With	JJIS datalink automatically pre-fills from youth record

2.0 Role – after selecting your role, the screen jumps to the applicable section (see questions on Page 4)

2.1 What is your role?	Multiple Choice <ul style="list-style-type: none"> • Juvenile Department Intake Worker (<i>complete Section 3</i>) • Detention Worker (<i>complete Section 4</i>) • County or OYA Probation/Parole or Case Manager (<i>complete Section 5</i>) • OYA Facility Worker (<i>complete Section 6</i>)
------------------------	--

7.0 Services or Resources

7.1 Did you refer the youth to services or resources?	<ul style="list-style-type: none"> • Yes/No
7.2 What type of services or resources did you refer the youth to?	Multiple Choice <ul style="list-style-type: none"> • Advocacy • CSE-IT Assessment • Culturally Specific Services • Family Counseling • Medical • Mental Health Treatment • Substance Use Treatment • Other (Please list in question note)

8.0 Score

8.1 Assessment Score	Reflects the running total of assigned scores for answers.
8.2 Is the total assessment score 4 or more? (<i>Ensure all mandatory questions have been answered before selecting Yes.</i>)	<ul style="list-style-type: none"> • Yes/No

9.0 Mandatory Child Abuse Report

9.1 If total score is 4 or more, a mandatory child abuse report is required.	<ul style="list-style-type: none"> • I acknowledge a mandatory child abuse report is required.
--	---

Sex Trafficking Vulnerability Screening – JJIS Assessment

Area	3.0	4.0	5.0	6.0	Questions	Answer Options
	Intake Worker	Detention Worker	County or OYA Probation/Parole or Case Manager	OYA Facility Worker	<p>The STVS is an observational-based screening. Do not ask the youth any direct questions from the STVS. Use information already available to you to complete the screening. Some people, because of their role and history with the youth, will be able to answer Yes or No to more of the STVS questions than others. We recommend completing any other screening and assessments for the youth before the STVS.</p>	
#.1.0	◆	◆	◆	◆	Have you observed, seen in documentation, or heard from other services providers any of the following:	
#.1.1	◆	◆	◆	◆	Multiple pregnancies	Yes, No, Unknown
#.1.2	◆	◆	◆	◆	History of multiple STIs	Yes, No, Unknown
#.1.3	◆	◆	◆	◆	Tattoos, burns, or scars to indicate branding	Yes, No, Unknown
#.1.4	◆	◆	◆	◆	Bruises, burns, dental issues	Yes, No, Unknown
#.1.5	◆	◆	◆	◆	Past physical and sexual abuse/child abuse report	Yes, No, Unknown
#.1.6	◆	◆	◆	◆	Substance use (e.g., visible signs, paraphernalia, history)	Yes, No, Unknown
#.1.7	◆	◆	◆	◆	(If yes) Was the substance use forced?	Yes, No, Unknown
#.1.8	◆	◆	◆	◆	Is there ODHS involvement?	Yes, No, Unknown
#.1.9	◆	◆	◆	◆	Attending school	Yes, No, Unknown
#.1.10	◆	◆	◆	◆	Non-Familial adult as primary caregiver – living with non-custodial adult	Yes, No, Unknown
#.1.11	◆	◆	◆	◆	Are there concerns about how they are meeting their basic needs?	Yes, No, Unknown
#.1.12	◆	◆	◆	◆	(If yes) How are they meeting their basic needs?	Text
#.1.13	◆	◆	◆	◆	Online platform concerns (e.g., multiple dating apps, Only Fans, Sugar Daddy, Camming, on-line gaming)	Yes, No, Unknown
#.1.14	◆	◆	◆	◆	Homeless/couch-surfing	Yes, No, Unknown
#.1.15	◆	◆	◆	◆	Concerns from other agencies (Family, Law Enforcement, ODHS, etc.)	Yes, No, Unknown
#.1.16	◆	◆	◆	◆	(If yes) What are the concerns?	Text
#.1.17	◆	◆	◆	◆	Youth self-reports history of trading anything of value for sex or being forced to do so	Yes, No, Unknown
#.1.18	◆	◆	◆	◆	Historical reports (ODHS, Law Enforcement) of trafficking/prostitution	Yes, No, Unknown
#.1.19	◆	◆	◆	◆	Any other concerns (e.g., medical)?	Text
#.1.20		◆	◆		Possessions/Items (e.g., expensive clothing, jewelry) that go beyond known resources	Yes, No, Unknown

JJIS Assessment Navigation – Sex Trafficking Vulnerability Screening

► Build Sex Trafficking Vulnerability Screening

For a selected youth record (e.g., in a search or caseload list) or from their open Youth Notebook . . .

1. Select **Youth** on the JJIS Toolbar.
2. Select **Assessments** from the drop-down menu.

The Assessments list opens.

3. Scroll through the list of Available Assessments in the upper half of the screen.
4. Select “**Sex Trafficking Vulnerability Screening**” from the list of Available Assessments.
5. Click **Build** to create a new Assessment from the selected template.

A new Assessment screen opens.

6. The current date and time automatically fill in the **Assessment Date** and **Time** fields.

Note: The Assessment Date can be changed to an earlier date if necessary and the time is optional; however, the date and time cannot be in the future.

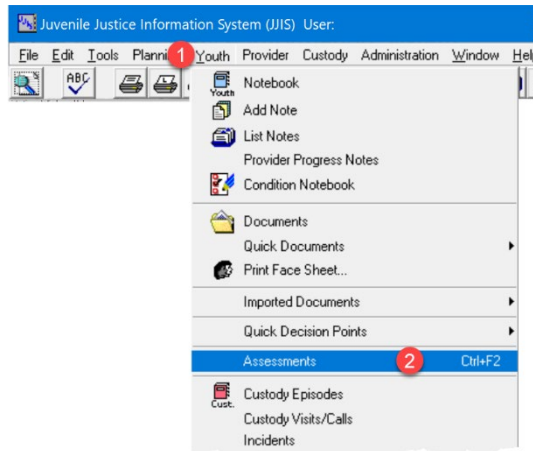
7. The **Office** and **Assessor** fields default to the currently logged-on user, but different values can be selected from the drop-down lists for each; the Assessor field is a combo box enabling the user to type directly into it.

The Question area contains items that pre-fill with demographic information already in JJIS, and others that are Yes/No, multiple choice options, or text entries.

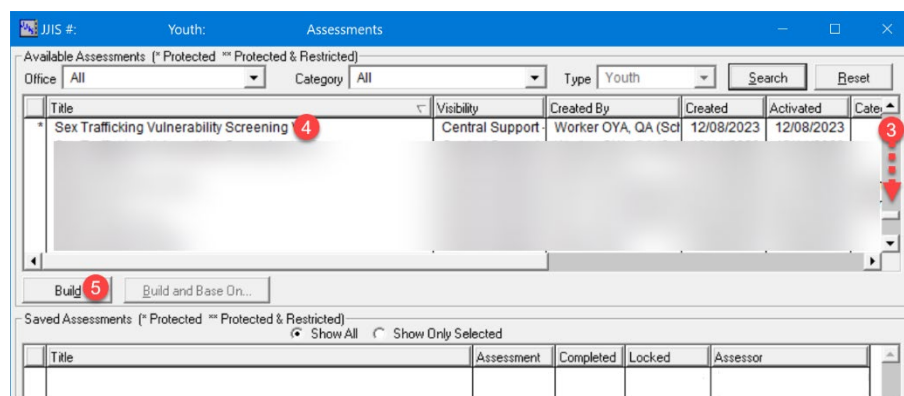
8. Select a question.
9. Select the appropriate **Answer** from the defined drop-down choices.

Questions that have pre-determined scores assigned for answers will display a number in the Score column. The Total field beneath the assessment questions reflects a running total of the scores.

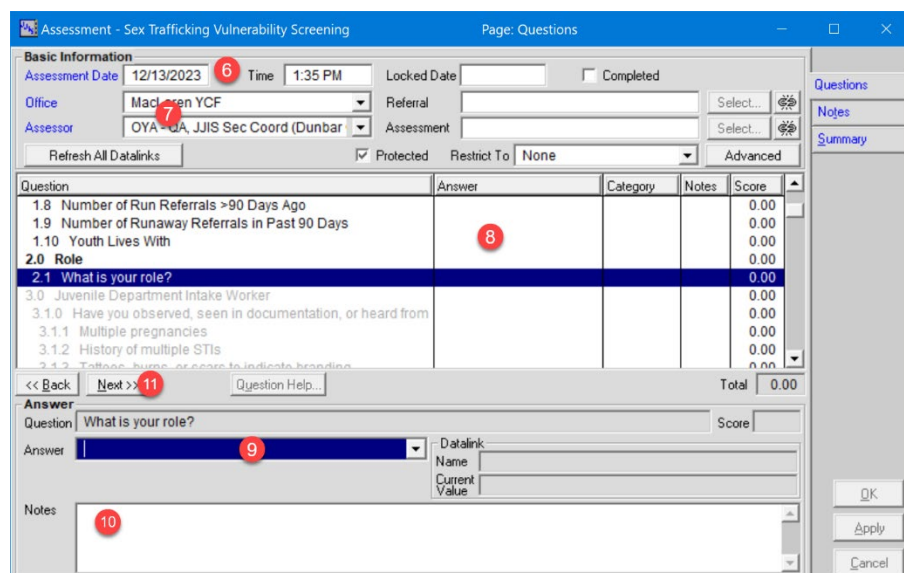
10. Optional: Enter additional **Notes**.



Youth menu



Youth Assessments list



JJIS Assessment Navigation – Sex Trafficking Vulnerability Screening

11. Move to the next question – either select the next question or click **Next >>**.

Continue through the questions.

Depending on the answer to a question, a subsequent question may be disabled (grayed out) or enabled.

For example, if a question is answered “Yes,” then the next question may ask for additional information.

12. After answering all questions, check the **Completed** box.*

The current date will automatically fill into the **Locked Date** field. (If a date is entered first, the Completed box must be checked.)

13. Click **OK** to save the assessment and exit the screen.

* *Checking the Completed box before all mandatory questions have been answered causes JJIS to display an error message indicating the questions that still require answers.*

Click OK to close the Error message, then answer the remaining questions or uncheck the Completed box.

When an Assessment is saved, it is added to the list of Saved Assessments in the lower portion of the Youth Assessments screen.

► Update Sex Trafficking Vulnerability Screening

If it is not possible to answer all of the questions at once, the screening assessment can be closed and updated later.

For a selected youth record (e.g., in a search or caseload list) or from their open Youth Notebook:

1. Select **Youth** on the JJIS Toolbar.
2. Select **Assessments** from the drop-down menu.

The Assessments list opens.

3. Select the “**Sex Trafficking Vulnerability Screening**” in the Youth’s list of saved Assessments in the lower area of the screen.
4. Click **Update** to open the assessment and resume answering the questions.

*THIS PAGE LEFT BLANK FOR PURPOSES
OF 2-SIDED PRINTING*